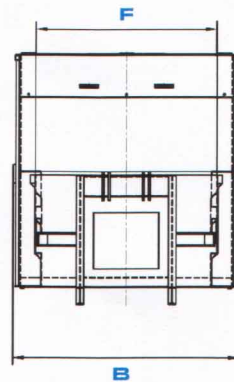
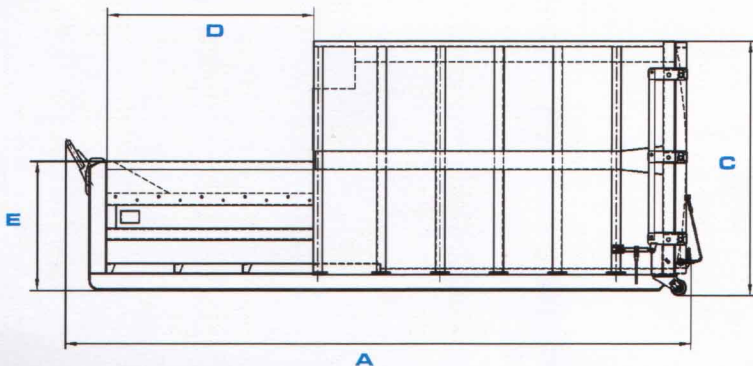


Specifications



Lifting system		Roll off/on unit					
Type		PCS18.PD	PCS18S.PD	PCS20.PD	PCS20S.PD	PCS23.PD	PCS23S.PD
Container volume	[m ³]	18	18	20	20	23	23
Hopper volume	[m ³]	3,37	3,37	3,37	3,37	3,37	3,37
Capacity/stroke	[m ³]	2,22	2,22	2,22	2,22	2,22	2,22
Min. theoretical cycle time	[sec]	50	39	50	39	50	39
Max. theoretical through put	[m ³ /h]	164	207	164	207	164	207
Compaction force	[kN]	370	370	370	370	370	370
Overall length	A [mm]	6700	6700	7100	7100	7600	7600
Overall width	B [mm]	2450	2450	2450	2450	2450	2450
Overall height	C [mm]	2710	2710	2710	2710	2710	2710
Hopper length	D [mm]	2200	2200	2200	2200	2200	2200
Loading height	E [mm]	1380	1380	1380	1380	1380	1380
Hopper width	F [mm]	1940	1940	1940	1940	1940	1940
Ram stroke	[mm]	1980	1980	1980	1980	1980	1980
Weight	[kg]	5730	5740	5930	5940	6240	6250
Maximum total weight	[kg]	15000	15000	15000	15000	15000	15000
Electric motor	[kW]	5,5	7,5	5,5	7,5	5,5	7,5
Electric supply	400V, 50Hz-standard plug CEE-Form 16A, 5-pole						